

Figure 3-2. Aquatic features of project area

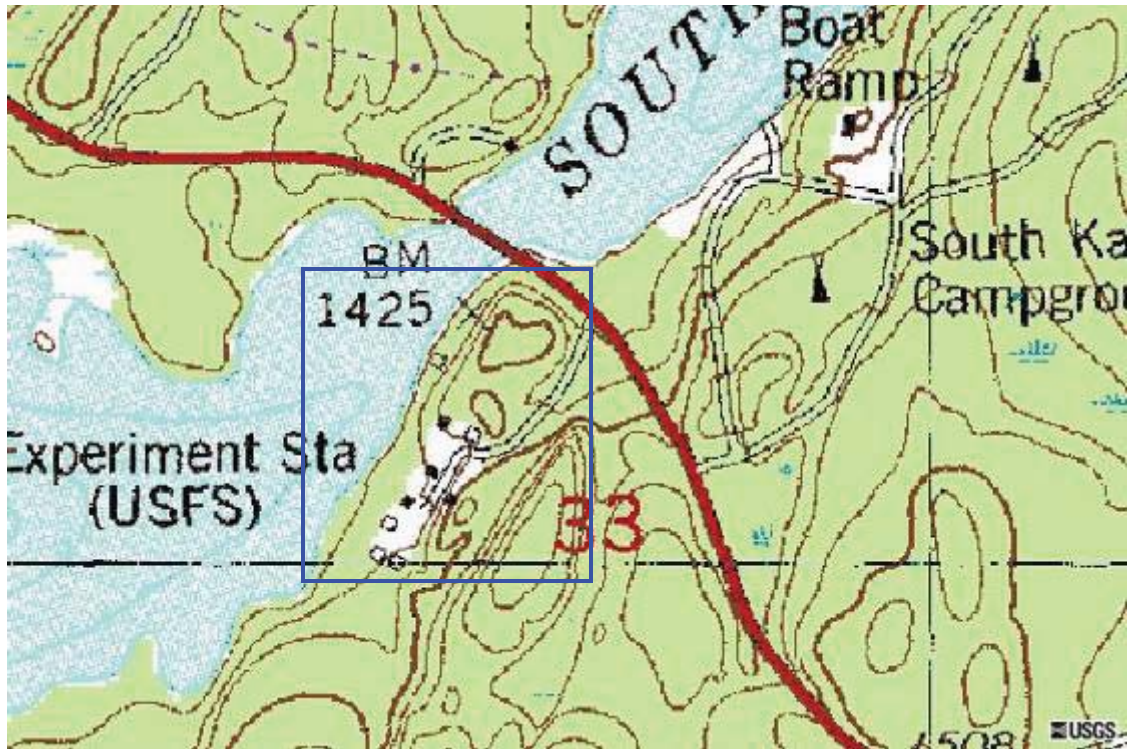
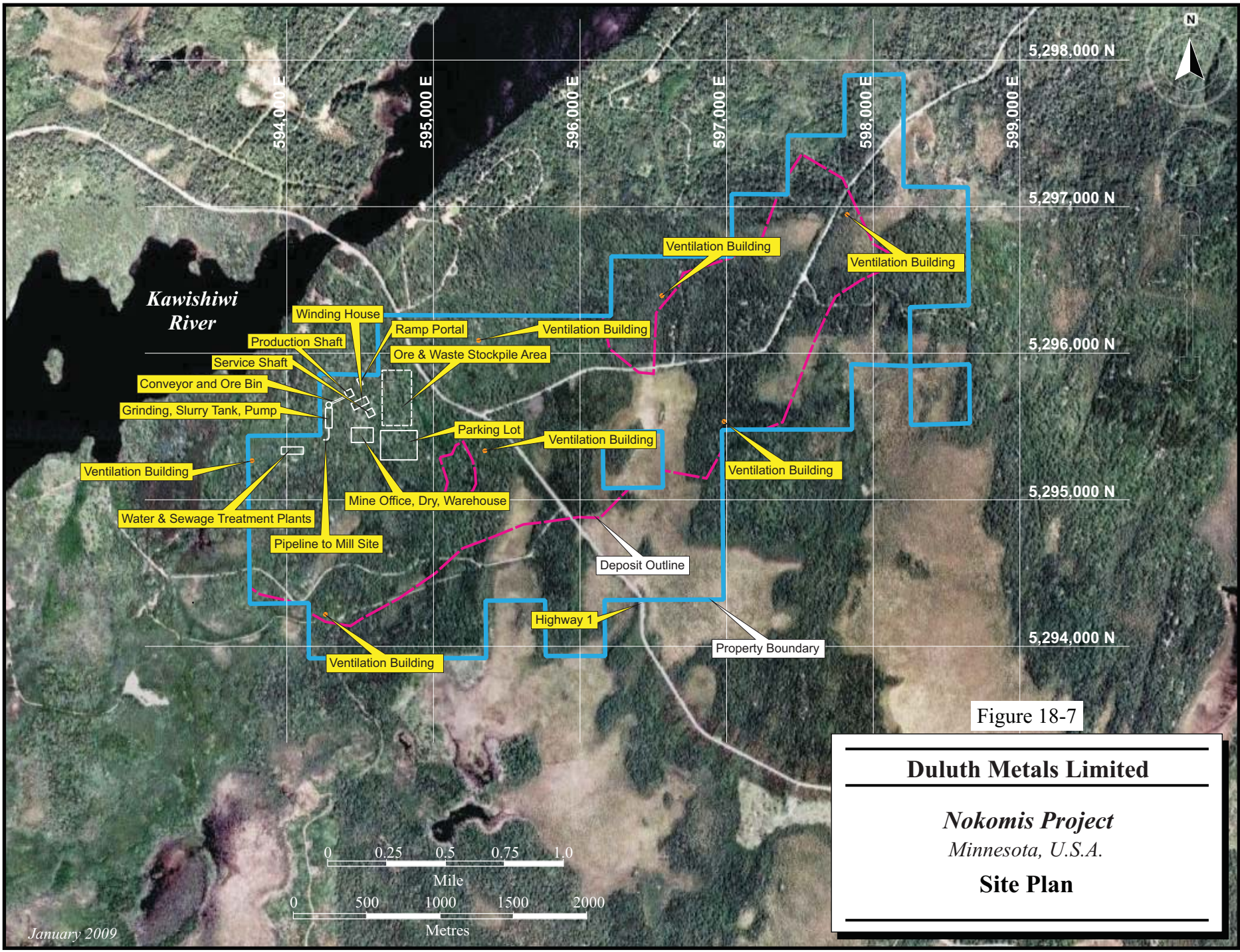


Figure 41. USGS topographic map showing the location of the HRSHD (TerraServer).

Longitude 91W 44' 19.86" -91.73885

Latitude 47N 48' 49.85" 47.81385

UTM Zone 15 easting 594446 northing 5296290 (NAD83)



18-36

Figure 18-7

Duluth Metals Limited

Nokomis Project
Minnesota, U.S.A.

Site Plan

January 2009